



MEDICAL IMAGING SUPPLY LEADER

## Medlink Veterinary ACR System

*The complete computed radiography system configured specifically for the needs of veterinarians.*



### System Features

The Medlink Veterinary CR System consists of a Kodak ACR-2000i computed radiography (CR) reader, acquisition workstation and software developed by DarkHorse Telemedicine.

The ACR-2000i is a table-top computed radiography system ideal for veterinary imaging environments. Images can be acquired in less than 1 minute with no film, chemicals or environmental issues. This compact system provides a simple plug and play CR solution for integrating x-ray studies into mini-PACS with telemedicine capabilities.

The ACR-2000i consists of a CR phosphor plate reader and plate eraser. The acquisition workstation includes a monitor and workstation equipped with DarkHorse image acquisition and telemedicine software.

### DarkHorse Telemedicine

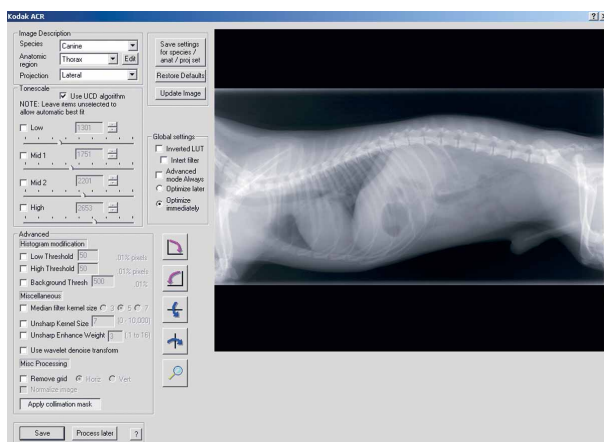
This unique veterinary software interface for the Kodak ACR-2000i was designed by DarkHorse Telemedicine, a company focused exclusively on providing telemedicine services to veterinarians. The software possesses image algorithms for all animal sizes. This software

provides image acquisition, image processing, image storage, geometric manipulation and telemedicine capabilities all from a single user interface.

Image results can be improved through the built in histogram optimization tool that ensures proper exposure of the phosphor plate. The application captures important patient information such as breed, species and owner information to be stored with each study. Studies are stored in a searchable database for easy retrieval. Images can be shared over a network and forwarded over the internet for further consultation.

**DarkHorse**  
Telemedicine





## PRODUCT SPECIFICATIONS

### Phosphor Plate Reader with Integrated Eraser For use in a darkened room

#### Dimensions:

- Width: 21 in. (52.5 cm)
- Depth: 27 in. (67.5 cm)
- Weight: 140 lbs. (63.6 kg)

#### Phosphor Plates Supported:

- 14 x 17 in. (35 x 43 cm)
- 10 x 12 in. (24 x 30 cm)
- 8 x 10 in. (20 x 25 cm)

#### Scan Rate:

- 50 seconds/plate

#### Erase Time:

- 30 seconds/plate

#### Power:

- 110-120 VAC 1 Amp 50/60 Hz

### Acquisition Work Station

#### Computer System

- 17 in. high definition color monitor
- PC with 200 GB hard drive
- Microsoft® Windows XP Professional operating system

### DarkHorse DTIMS Software

- Preview images
- Image processing
- Image storage
- Geometric manipulation
- Integrated telemedicine
- eFilm
- Image distribution and enhancement

## MEDLINK IMAGING

New York Corporate Office & Distribution Center  
200 CLEARBROOK ROAD, ELMSFORD, NY 10523

California Distribution Center  
517 MAPLE AVENUE, CARPINTERIA, CA 93013

Toll Free 1-800-456-7800  
Fax 1-888-437-9729

[www.medlinkimaging.com](http://www.medlinkimaging.com)