

SPECIFICATIONS

High Frequency X-ray Generators

CONSTANT POTENTIAL POWER RATINGS (*)	16 kW	20 kW	32 kW
KVP RANGE IN 1 kVP STEPS ACCURACY	40 TO 125 ±(5%+1kVp)		
MA STATIONS ACCURACY	10, 12'5, 16, 20, 25, 32, 40, 50, 64, 80, 100, 125, 160, 200 ±(5%+0.1 mA)	10, 12'5, 16, 20, 25, 32, 40, 50, 64, 80, 100, 125, 160, 200, 250, 320 ±(5%+0.1 mA)	10, 12'5, 16, 20, 25, 32, 40, 50, 64, 80, 100, 125, 160, 200, 250, 320 ±(5%+0.1 mA)
EXPOSURE TIME RANGE ACCURACY	0.001 - 5 SECONDS ±(1%+0.1 ms)		
MAs RANGE	0.1 - 500 MAs		
AUTOMATIC EXPOSURE CONTROL (A.E.C.)	OPTIONAL		
ANIMAL PROGRAMME RADIOGRAPHY (A.P.R.)	STANDARD - (330 ANATOMICAL VIEWS)		
X-RAY TUBE - ROTATING ANODE (2,850 R.P.M.) (50 Hz) (3,300 R.P.M.) (60 Hz)	FOCAL SPOT: 1.0 MM	FOCAL SPOTS: 1.0/2.0 MM	FOCAL SPOTS: 1.0/2.0 MM
LINE VOLTAGE AND PHASES	220/240/380/415/440/480 - (50/60Hz) - 1 PHASE / 3 PHASE		
FOCAL FILM DISTANCE RANGE	300 - 1,200 MM / 11.8 - 47.2 INCHES (CONTINUOUSLY ADJUSTABLE)		
FOOTPRINT	2,6 m ² (EQUIPMENT + ACCESS AREA)		
TOTAL WEIGHT (X-RAY GENERATOR INCLUDED)	SYSTEM 1 = 375 KG		SYSTEM 2 = 310 KG
TABLE TOP / PEDESTAL / WALL MOUNTING CONSOLE	OPTIONAL		
RECIPROCATING BUCKY	OPTIONAL		
FLUOROSCOPY	N.A.	OPTIONAL	OPTIONAL

(*) X-ray generators available at 40 kW, 50 kW, 64 kW and 80 kW power levels.

DIMENSIONS

SYSTEM 1



SYSTEM 2

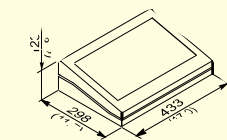
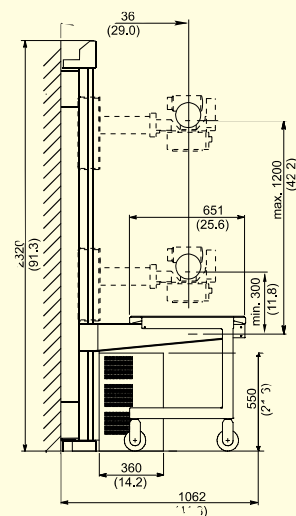
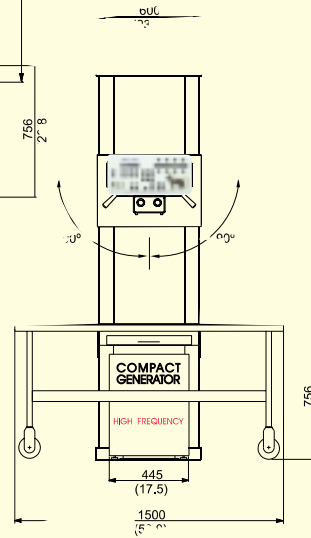
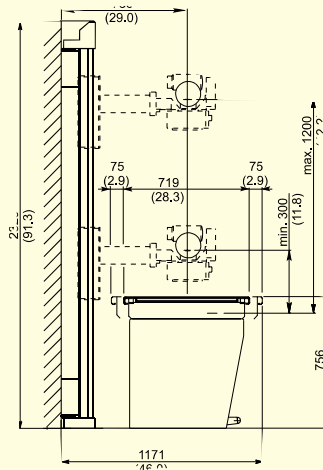
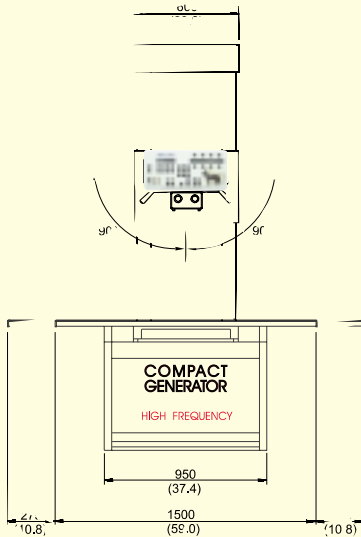
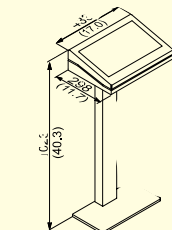


TABLE TOP / WALL MOUNTING CONSOLE



PEDESTAL CONSOLE

Specifications subject to change without notice

In the United States, Canada and Mexico:

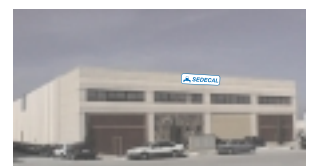
SEDECAL USA

190 Shepard Avenue, Unit C
Wheeling, Illinois 60090 - USA
Tel: 1 (847) 215 - 7878
Fax: 1 (847) 215 - 7999
Email: sales@sedecalusa.com

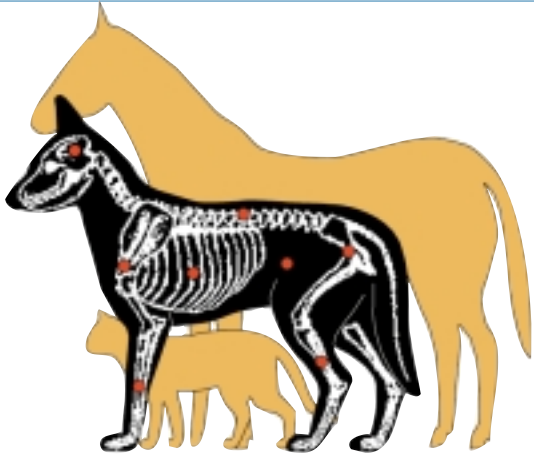
In Europe, Asia, Latin America and all other countries:

SEDECAL

Pelaya, 9 - Polígono Industrial "Río de Janeiro"
28110 - Algete (Madrid) - SPAIN - www.sedecal.com
Central Offices: Factory:
Tel: (34) 91-628 0544 / 91-628 1592 Tel: (34) 91-629 0721
Fax: (34) 91-628 0574 Fax: (34) 91-629 0783
Email: sales@sedecal.com Email: manufacturing@sedecal.com



Variable SID Series



SYSTEM 1



SYSTEM 2

